

Meet the Editors

Author : admin

Date : July 22, 2010

Administrative Law Section Editors

The Section Editors choose the Contributing Editors and exercise editorial control over their section. In addition, each Section Editor will write at least one contribution (“jot”) per year. Questions about contributing to a section ought usually to be addressed to the section editors.



Professor [A. Michael Froomkin](#)
University of Miami School of Law



Professor [Christopher J. Walker](#)
Ohio State University Moritz College of Law

Contributing Editors

Contributing Editors agree to write at least one jot for Jotwell each year.



Professor [Jack M. Beermann](#)
Harry Elwood Warren Scholar
Boston University School of Law



Professor [Cary Coglianese](#)
Deputy Dean and Edward B. Shils Professor of Law
and Professor of Political Science; Director, Penn Program on Regulation
University of Pennsylvania School of Law



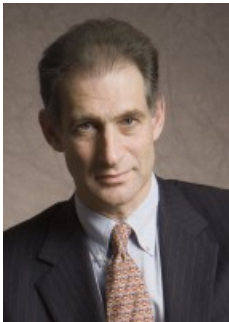
Professor [Steven P. Croley](#)
Harry Burns Hutchins Collegiate Professor of Law
University of Michigan Law School



Professor [William Funk](#)
Robert E. Jones Professor of Advocacy and Ethics
Lewis & Clark Law School



Professor [Jacob E. Gersen](#)
Professor of Law
Harvard Law School



Professor [Michael Eric Herz](#)
Director of the Floersheimer Center for Constitutional Democracy
Benjamin N. Cardozo School of Law / Yeshiva University



Professor [Linda Jellum](#)
Mercer University School of Law



Professor [Richard Murphy](#)
AT&T Professor of Law
Texas Tech University School of Law



Professor [Anne Joseph O'Connell](#)
University of California Berkeley School of Law, Boalt Hall



Professor [Richard J. Pierce, Jr.](#)
Lyle T. Alverson Professor of Law
The George Washington University Law School



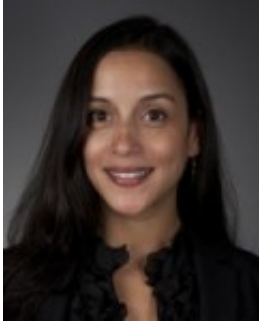
Professor [Mark Seidenfeld](#)
Patricia A. Dore Professor of Administrative Law
Florida State University College of Law



Professor [Peter M. Shane](#)
Jacob E. Davis and Jacob E. Davis II Chair in Law
Ohio State University Moritz College of Law



Professor [Jodi L. Short](#)
Harry & Lillian Hastings Research Chair
University of California Hastings College of the Law



Professor [Mila Sohoni](#)
Assistant Professor of Law
University of San Diego School of Law



Professor [Adrian Vermeule](#)
Harvard Law School



Professor [Kathryn Watts](#)
Associate Dean for Research & Faculty Development
University of Washington School of Law

Former Editors



Professor [Lisa Schultz Bressman](#)
Associate Dean for Academic Affairs; Co-Director, Regulatory Program
Vanderbilt University Law School



Professor [Gillian Metzger](#)
Columbia Law School



Professor [Paul R. Verkuil](#)
[Chairman of the Administrative Conference of the United States](#)
Benjamin N. Cardozo School of Law / Yeshiva University



Professor [Jonathan Weinberg](#)
Wayne State University